

I A A B O Training Brief



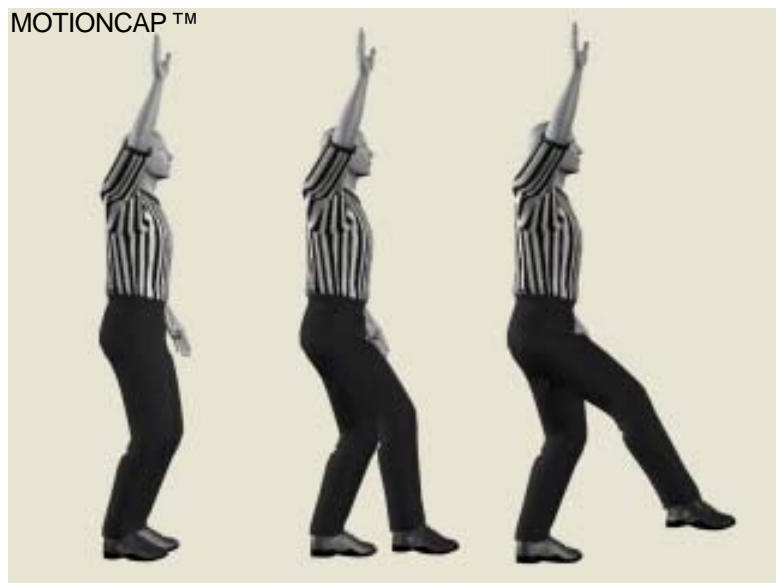
USING CORRECT TERMINOLOGY

Players today are stronger, taller and more agile, thus making the probability of basket interference and goaltending more frequent. In order to effectively officiate basket interference and goaltending, officials must understand the components of the basket—to include the imaginary cylinder and backboard. As illustrated, the basket consists of the 18-inch ring, its flange, brackets and appended net through which players attempt to throw or tap the ball. The imaginary cylinder extends directly above the basket with the ring serving as the lower base. With this understanding, officials will be better prepared to correctly officiate “Play Above the Ring.”

NEW KICKING SIGNAL

A new signal for a kicking violation has been added to the chart this year. Instead of wondering what to do if a kicked ball resulted in a violation, the manual committee has now created a signal to coincide with what officials have been doing for some time by instinct. The new mechanic to signal the violation is to first stop the clock, then from a straight leg use a kicking motion forward about a foot.

MOTIONCAP™



TWO PERSON MECHANICS

When the Trail Official has coverage on the ball and the ball is located above the free throw line or outside the arc, the Lead Official has off-ball coverage and must assist and frequently extend off-ball coverage by crossing over to the other side of the lane (lined area). But keep in mind the Lead Official exercises this option to assist the Trail and must return to the appropriate side of the floor in transition.

THREE PERSON MECHANICS

Primary Coverage Area—Eliminates the dual coverage area between the Trail and Lead. Trail Official primary coverage area (illustrated in white) extends to the farther lane line above the free throw line to the division line. The Lead Official primary coverage area (illustrated in dark gray) extends from the middle of the lane to the nearer 3-point arc. Center Official primary coverage area (illustrated in light gray).

